



Mill Duty and Motorized Cable Reel Application Questionnaire

Contact Information

Date:	Phone:
Name:	Company:
Email:	Notes:

General Equipment Information

What is the equipment? _____

How will the reel be used? (Select one)

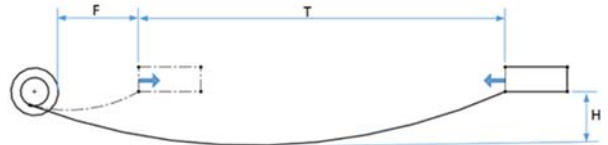
Lift (cable reels are NOT lifting devices)



Drag

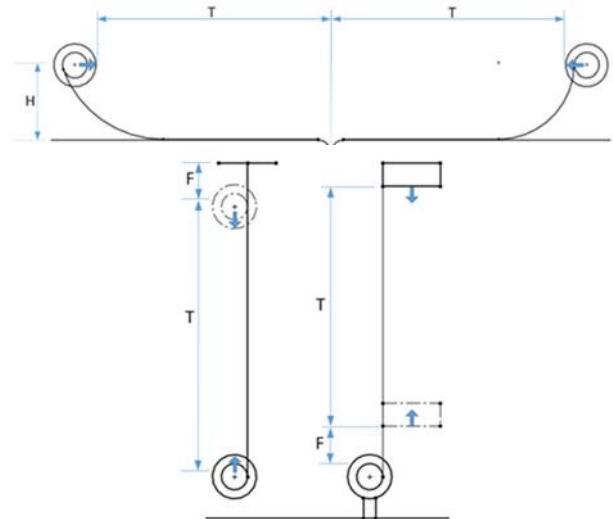


Sag



Other (Sketch Application)

Retrieve



Will the cable run through pulleys/rollers/sheaves? _____



Electrical Requirements

Ampacity required per conductor: _____ Amps
 Ground and/or ground check? YES / NO _____ Amps
 Operating voltage of equipment: _____ Volts
 Allowable voltage drop in % of voltage required: _____ %
 Number of conductors needed, including ground and/or ground check: _____ Conductors

Are there any special requirements for electrical cable?

If cable reel is to be driven by motor, what motor voltage is required? _____ Volts

Cable Information (use only when Magnetek does not provide cable)

Cable type or name: _____
 Outer diameter of cable: _____ inches
 Cable weight: _____ pounds per ft.
 Minimum allowable flexing bending radius: _____ inches
 Maximum allowable constant tension: _____ pounds

Environmental Requirements

Ambient temperature range: _____
 Average ambient humidity: _____

- Indoor
- Outdoor
- Chemical/dust/oil/gas/corrosive
- Other: _____

Enclosure Requirement: (standard is IP55)

- NEMA _____
- IP _____

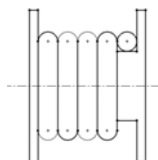
Metal finish of drum:

- Standard wet epoxy resin paint, color RAL 7031
- Hot-Dip Galvanized
- Stainless Steel
- Other: _____

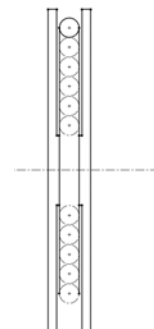
Cable Reel Application Requirements

What type of cable storage is required?

Cylindrical



Monospiral





Travel speed of equipment:
_____ speed (ft/min)

Time it takes to reach travel speed or acceleration:
_____ seconds it takes to reach travel speed (sec), OR _____ acceleration of equipment (ft/sec²)

Cable movements per hour: _____

Operating hours per day: _____

Accessories:

- Slack detection payout guide
- Roller payout guide
- Cable pulley
- Power feed tunnel

Payout direction when looking at the slip ring cover (standard is counter clockwise): _____

Fixed or Inactive length (this could also be hook-up slack): _____ feet

Travel distance: _____ feet

For Sag Applications

Calculations for allowable sag of cable (see illustrations above)

H(in) / (T + F) (ft) = _____ % (standard is 10%), OR

H = _____ inches

Horizontal Retrieving Applications Only

Mounting height of reel:

H = _____ feet